

Documentation electrical frame model 501-11 Wood-Line

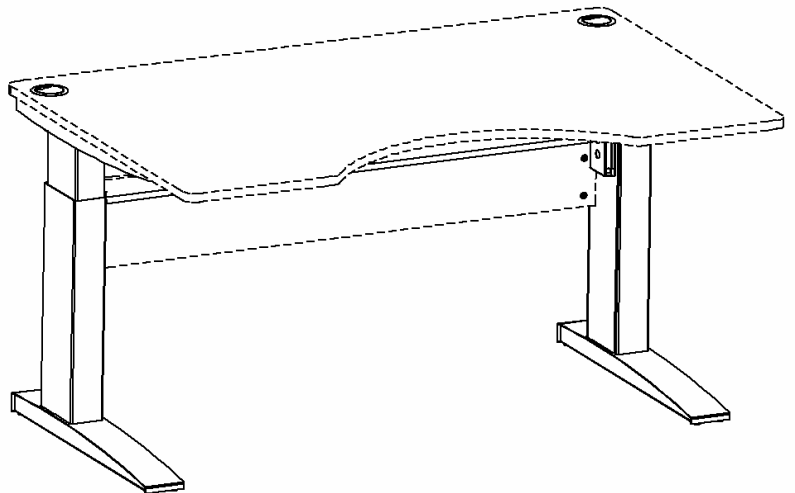
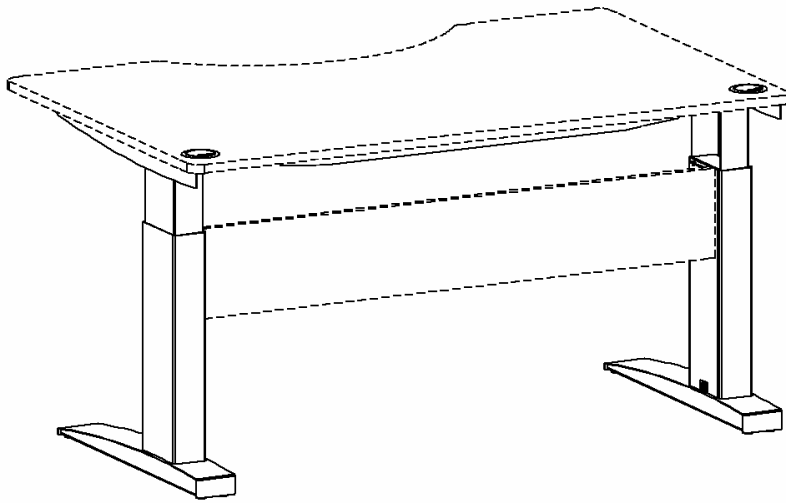
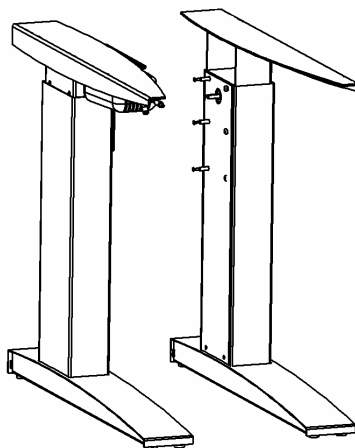


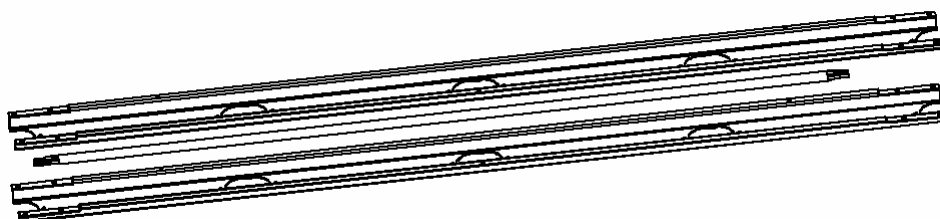
Table of contents

Packing specifications	page 3
Main measures	page 4
Specification, wooden parts	page 5
Assembly and use	page 7
Component specifications	page 8

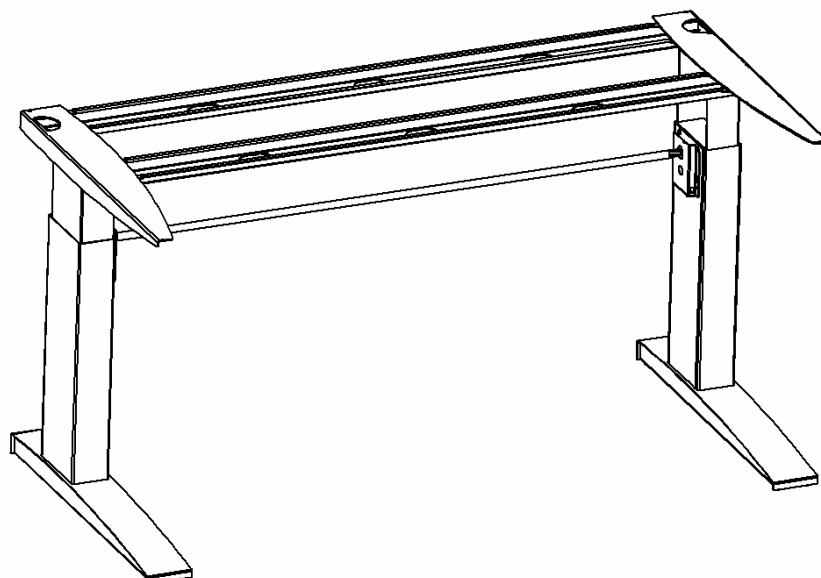
Packing specifications



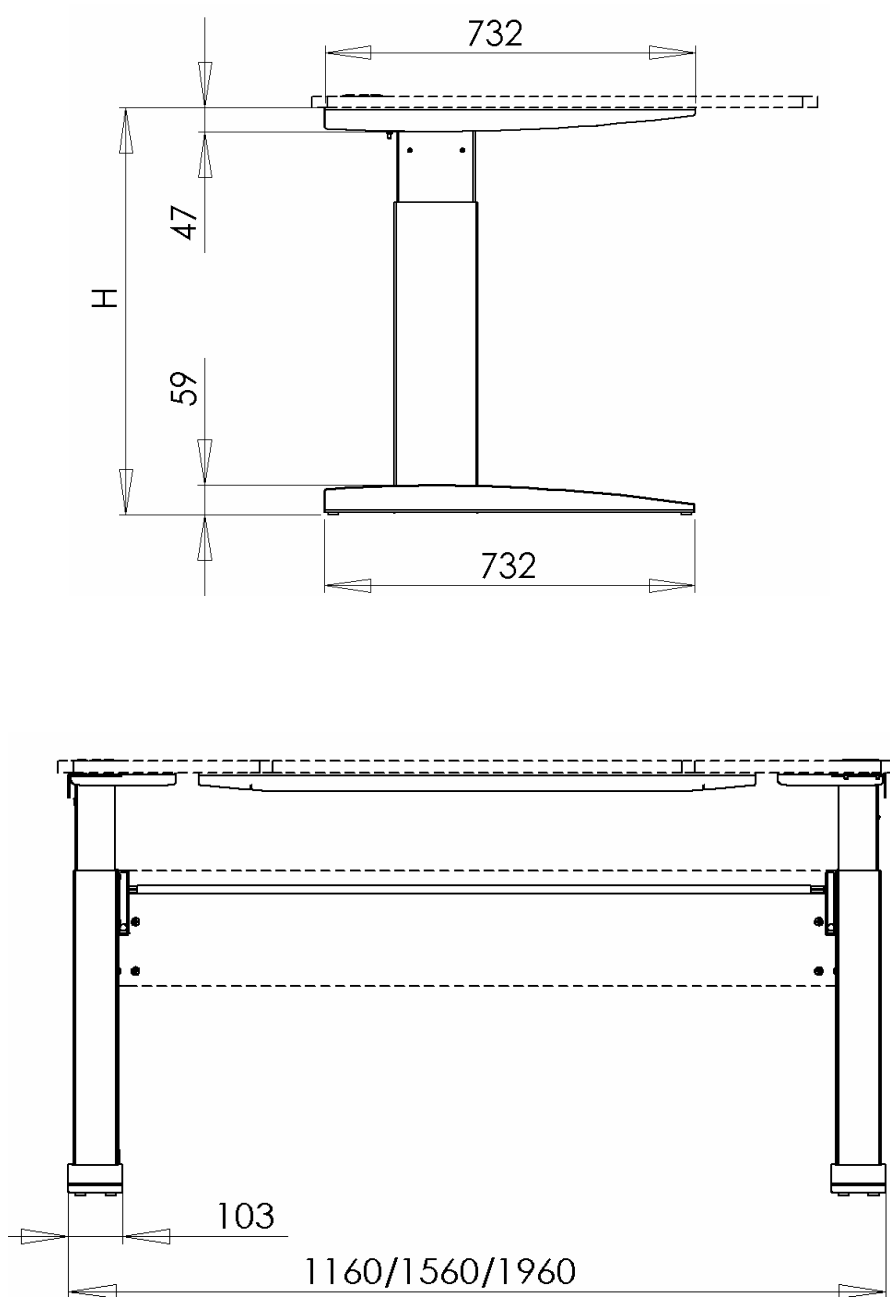
Colli A



Colli B



Main measures



H (height), frame only

63 - 120cm

W (width)

116 / 156 or 196cm

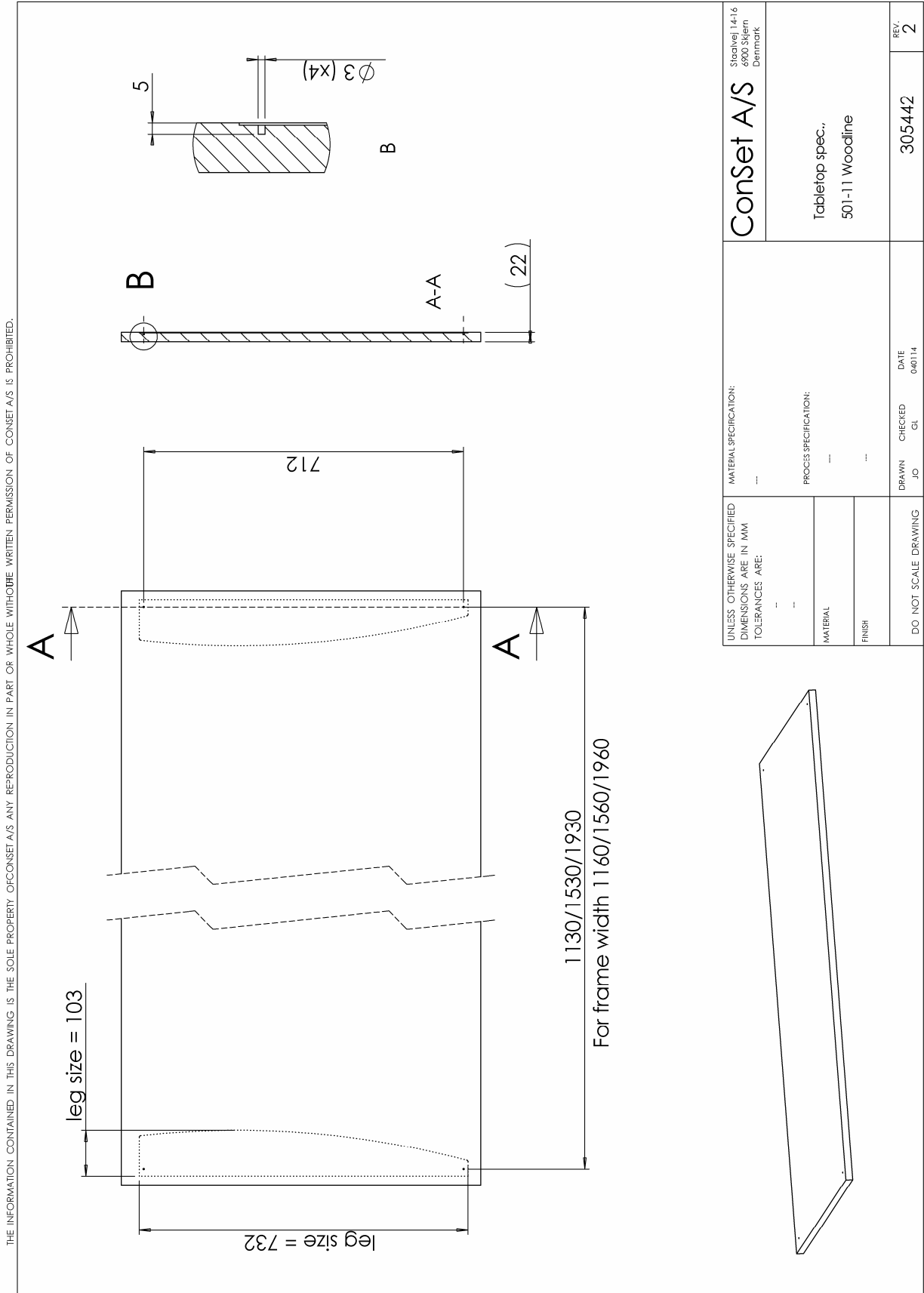
Lifting capacity, frame

150 kg

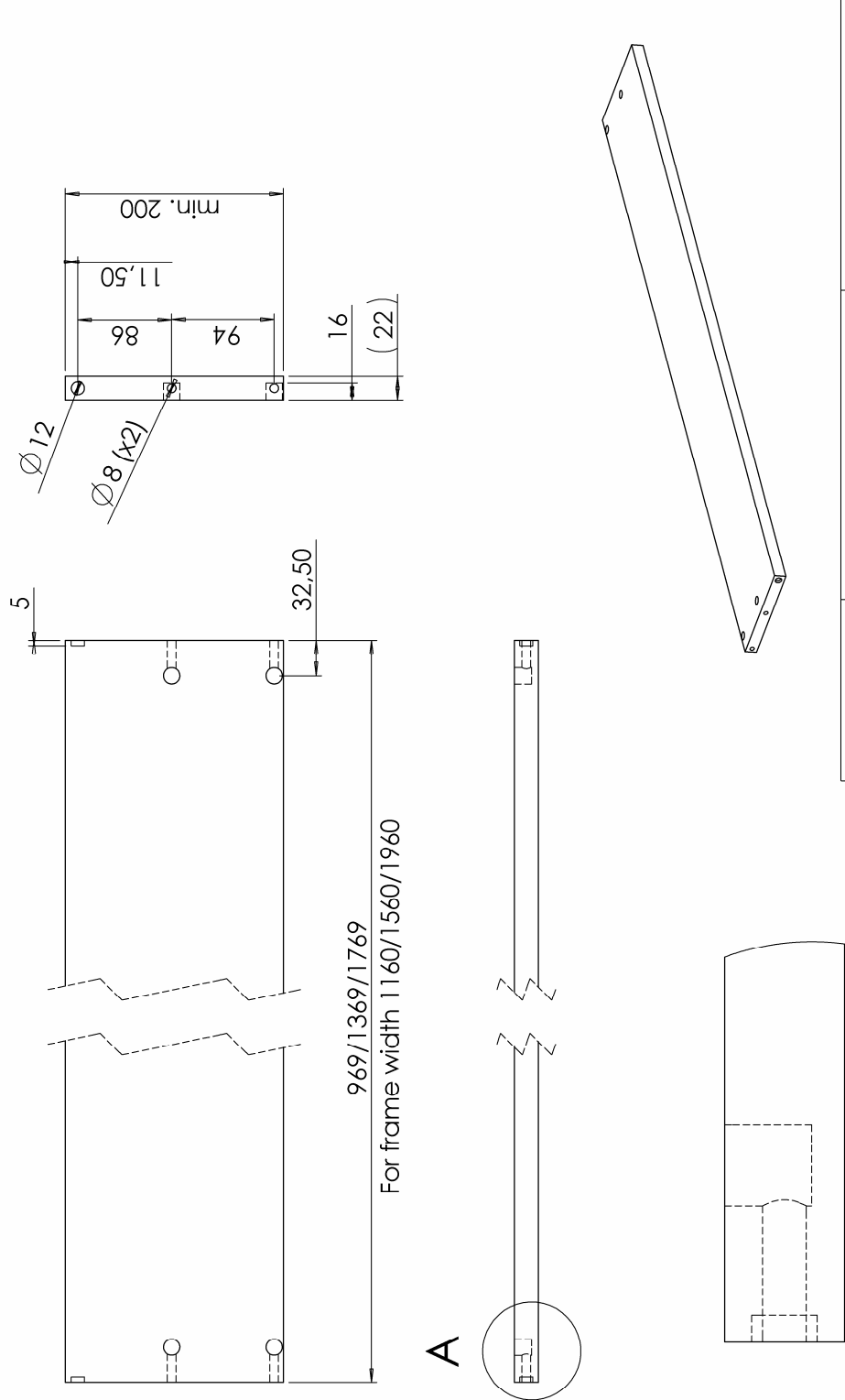
Speed

28 mm/sec

Specification, wooden parts



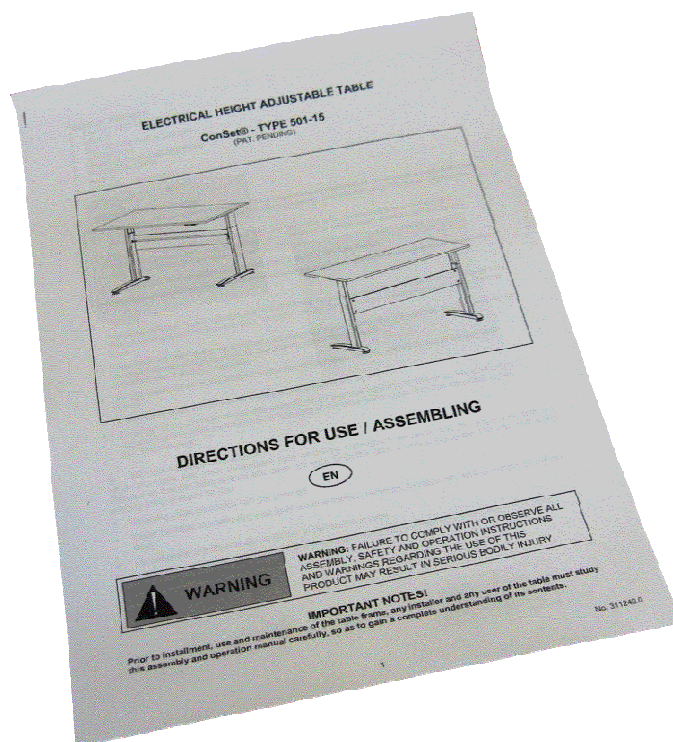
THE INFORMATION CONTAINED IN THIS DRAWING IS THE SOLE PROPERTY OF CONSET A/S ANY REPRODUCTION IN PART OR WHOLE WITHOUT THE WRITTEN PERMISSION OF CONSET A/S IS PROHIBITED.



UNLESS OTHERWISE SPECIFIED DIMENSIONS ARE IN MM TOLERANCES ARE:	---	MATERIAL SPECIFICATION:	---	Conset A/S	Staalvej 14-16 6600 Skjern Denmark
MATERIAL	---	PROCESS SPECIFICATION:	---	Lower travel spec., 501-11 Woodline	
FINISH	---				
DO NOT SCALE DRAWING	DRAWN JO	CHECKED GL	DATE 04/01/14	305432	REV. 2

Assembly and use

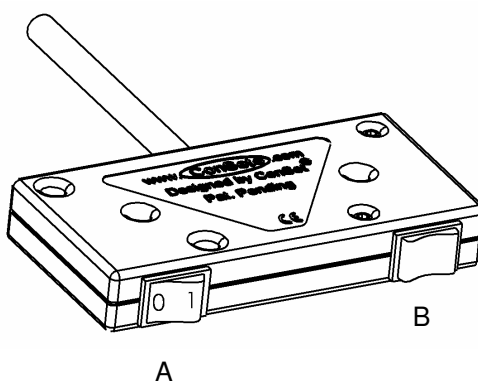
Along with all products a “Direction for assembly and use” is delivered. In this you will find a detailed description of the way of assembly.



After the frame has been mounted the chosen tabletop is mounted and the operation unit will be possible to fix at the bottom side of the tabletop. This operation unit has two rocker switches.

With rocker switch A it is possible to disconnect the AC voltage. If disconnected the standby consumption is 0 W !

With rocker switch B it is possible to move the tabletop up and down and can be stopped at all levels.



Component specifications

Metal sheet parts:	St 37-2
Gear parts:	St 70-2
Gear motor:	Bosch no. 0 390 257 685
Power supply:	100 W switch mode power supply Consumption: 100 Watts; Standby: 0 Watts
Plastic components:	PEHD, PA6
Surface treatment	Visible metal parts powder coated in black, RAL 9004 or "alu" colour RAL 9006 Non visible metal parts are surface treated (e.g. zinc plated)